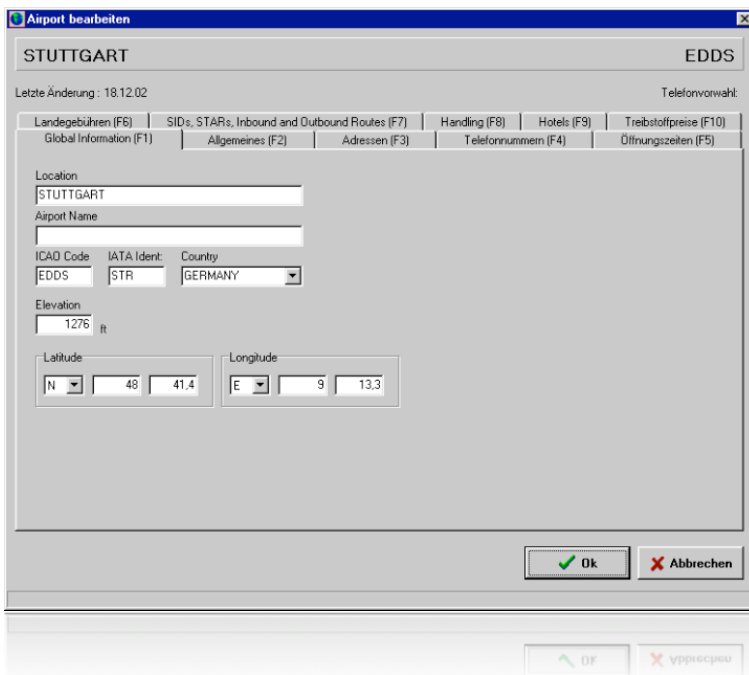


To give you an insight into the extensive data management of Aviation Office you can get more information about selected data objects. These data objects contain information about the listed areas.

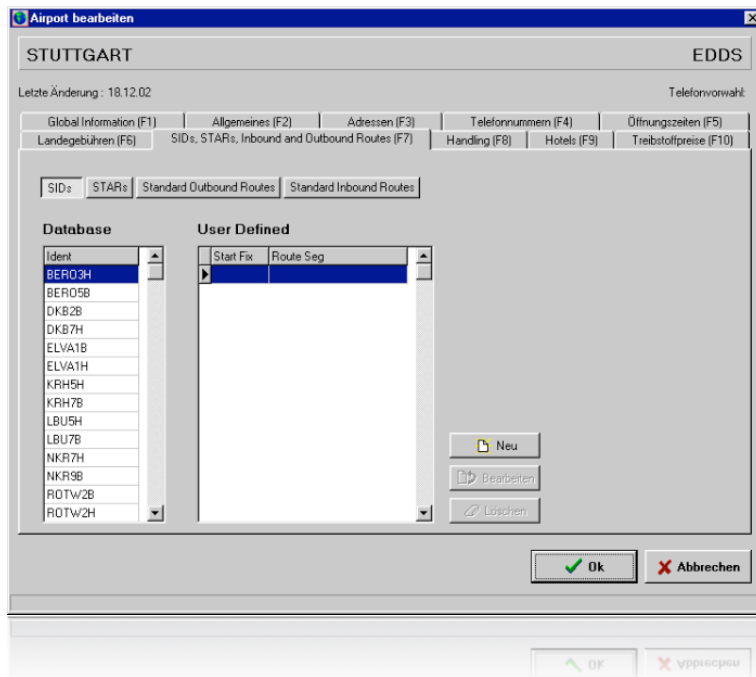
Airports

○ Global Information

A screenshot of a software window titled "Airport bearbeiten" (Edit Airport). The window displays the details for the Stuttgart airport (EDDS). The title bar shows "STUTTGART" and "EDDS". Below the title bar, it indicates "Letzte Änderung: 18.12.02" and "Telefonvorwahl:". The main area is divided into several tabs: "Landegebühren (F6)", "Global Information (F1)", "SID's, STAR's, Inbound and Outbound Routes (F7)", "Allgemeines (F2)", "Adressen (F3)", "Handling (F8)", "Telefonnummern (F4)", "Hotels (F9)", "Öffnungszeiten (F5)", and "Treibstoffpreise (F10)". The "Global Information (F1)" tab is active, showing fields for "Location" (STUTTGART), "Airport Name", "ICAO Code" (EDDS), "IATA Ident." (STR), "Country" (GERMANY), "Elevation" (1276 ft), "Latitude" (N 48 41.4), and "Longitude" (E 9 13.3). At the bottom right, there are two buttons: "Ok" and "Abbrechen".

- General
- Addresses
- Opening hours
- Landing fees

- SIDs, STARs, Standard Outbound Routes und Standard Inbound Routes



- Handling
- Hotels
- Fuel prices

Airplanes

○ General

Luftfahrzeugdaten
✖

Identification : **D-IHAN**

Weight and Balance (1) | Weight and Balance (2) | Fuel | Flüge | Cost Control | Maintenance | Calculation
General | Flightplan | Cruise, Climb and Descent | Take-Off and Landing | Approach, Holding and Alternate Planing

Type of Aircraft :

Wake Turbulence Category :

Equipment :

Aircraft Color :

Beschreibung

Required Type-Rating:

Flugzeit von Off-Block bis On-Block (Blockzeit)

Bei Kalkulation in List anzeigen

Time For Turn Around

Routing Category

Vorgabe für Routing

Routingauswahl

Jet

Turboprop

Alle

Kategorie4

Kategorie5

? Hilfe
✔ Ok
✖ Abbruch

○ Flight plan

Luftfahrzeugdaten
✖

Identification : **D-IHAN**

Weight and Balance (1) | Weight and Balance (2) | Fuel | Flüge | Cost Control | Maintenance | Calculation
General | Flightplan | Cruise, Climb and Descent | Take-Off and Landing | Approach, Holding and Alternate Planing

Standard Type of Flight :

Emergency Radio: UHF VHF ELBA

Survival Equipment: Polar Desert Maritime Jungle

Jackets: Light Fluores UHF VHF

Standard Pilot :

Available at :

Max Range: NM Min req. Rwy Length ft Std. Pers. on Board :

Standard Endurance :

Standard Levels

VFR Level

ab 0 Nm	FlightLevel	
ab 0 Nm	FL080	<input type="button" value="Hinzufügen"/>
ab 60 Nm	FL120	<input type="button" value="Bearbeiten"/>
ab 80 Nm	FL160	<input type="button" value="Löschen"/>

Standard Speeds

VFR Speed :

IFR Speed :

? Hilfe
✔ Ok
✖ Abbruch

- Cruise, Climb and Descent Performance

Identification : **D-IHAP**

Weight and Balance (1) | Weight and Balance (2) | Fuel | Flüge | Cost Control | Maintenance | Calculation
 General | Flightplan | **Cruise, Climb and Descent** | Take-Off and Landing | Approach, Holding and Alternate Planning

MCT

ISA	ISA +10						
FF/TAS	9500	10500	11000	11500	12000	12300	
FL 050	1304/279	1313/279	1318/279	1322/279	1328/279	1331/279	
FL 100	1383/316	1391/316	1396/316	1401/316	1406/316	1410/316	
FL 150	1349/339	1357/339	1362/339	1367/339	1373/339	1376/339	
FL 210	1320/371	1330/371	1335/371	1341/371	1347/371	1350/371	
FL 250	1323/394	1334/394	1340/394	1346/394	1352/394	1357/394	
FL 290	1343/415	1341/413	1338/412	1338/412	1336/411	1335/410	
FL 310	1252/413	1254/412	1250/411	1250/411	1249/410	1249/409	
FL 330	1151/410	1165/410	1169/410	1169/409	1165/408	1164/407	
FL 350	1053/407	1068/407	1076/407	1084/407	1087/406	1085/405	

- Take-Off and Landing Performance

Identification : **D-IHAP**

Weight and Balance (1) | Weight and Balance (2) | Fuel | Flüge | Cost Control | Maintenance | Calculation
 General | Flightplan | Cruise, Climb and Descent | **Take-Off and Landing** | Approach, Holding and Alternate Planning

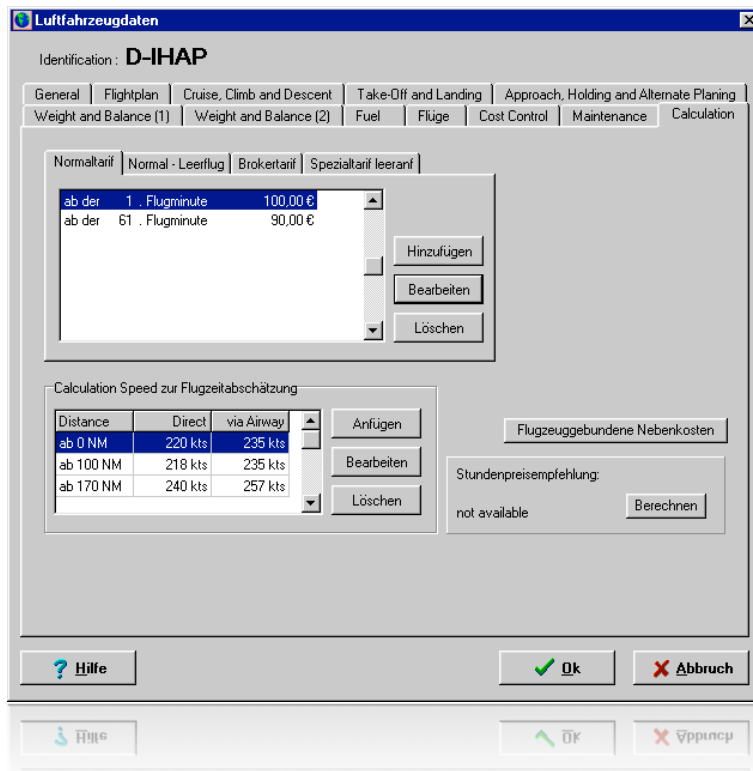
Take-Off | Landing

Runway Factor

ALT	WEIGHT	TEMP	HEADWIND	RWY-DIST	V1	VR	V2	Verr	Vref
0	8500	15	0	2640	94	94	107	115	96
0	9000	-20	0	2360	94	95	106	118	100
0	9000	-15	0	2400	94	95	106	118	100
0	9000	-10	0	2440	94	95	107	118	100
0	9000	-5	0	2480	94	95	107	118	100
0	9000	0	0	2520	94	95	107	118	100
0	9000	5	0	2560	94	95	107	118	100
0	9000	10	0	2600	94	95	107	118	100
0	9000	15	0	2640	94	95	107	118	100
0	9000	20	0	2680	94	95	107	118	100
0	9000	25	0	2670	93	94	106	118	100
0	9000	30	0	2610	90	93	103	118	100

- Approach, Holding and Alternate Planning
- Weight & Balance
- Fuel

- Calculation



Luftfahrzeugdaten

Identification : **D-IHAP**

General | Flightplan | Cruise, Climb and Descent | Take-Off and Landing | Approach, Holding and Alternate Planing
 Weight and Balance (1) | Weight and Balance (2) | Fuel | Flüge | Cost Control | Maintenance | Calculation

Normaltarif | Normal - Leerflug | Brokertarif | Spezialtarif leerant

ab der	1 . Flugminute	100,00 €
ab der	61 . Flugminute	90,00 €

Hinzufügen
 Bearbeiten
 Löschen

Calculation Speed zur Flugzeitabschätzung

Distance	Direct	via Airway
ab 0 NM	220 kts	235 kts
ab 100 NM	218 kts	235 kts
ab 170 NM	240 kts	257 kts

Anfügen
 Bearbeiten
 Löschen

Flugzeuggebundene Nebenkosten

Stundenpreisempfehlung:
 not available

Berechnen

Hilfe Ok Abbruch

Pilots

- Information about availability
- Typeratings
- Remuneration model

Customers

- Contact person
- Customized price
- Customized calculation positions